

# Farm to Early Care and Education in Washington – A Statewide Survey & Report

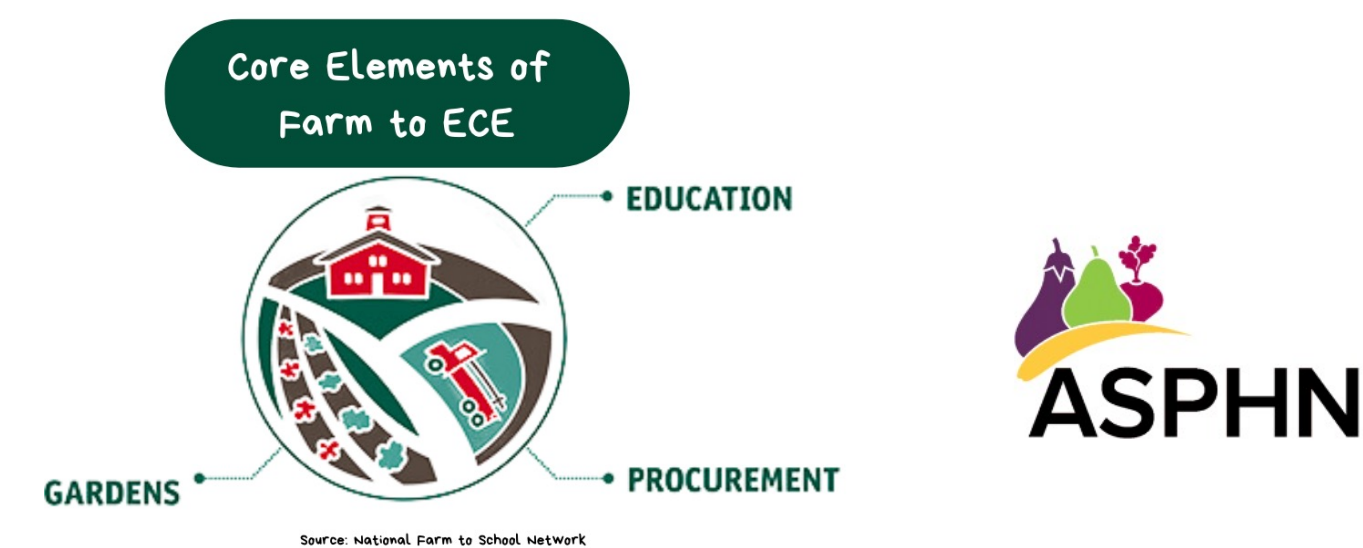
Completed by: Katie McConaughy, UW Nutritional Sciences Program, MPH – Nutrition Student & Dietetic Intern  
Preceptor: Vic Colman, JD, Uncommon Solutions, Alex Hyman, MPH, WA Department of Health

## BACKGROUND

- Farm to Early Childcare and Education (Farm to ECE) initiatives incorporate local food, agriculture, and nutrition through experiential learning opportunities in early childcare settings
- Farm to ECE can improve children’s dietary habits and cultivate a connection to food
- Benefits extend beyond the individual level; Farm to ECE can support community health, food systems, and local farmers
- In January 2023, the Washington Farm to ECE survey was launched to understand current engagement, motivations, barriers, and opportunities to better support ECE providers



Young children at work in the garden  
Credit: Child Care Aware NW / Opportunity Council



## PROJECT OBJECTIVES

1. Perform analysis of 2023 WA Farm to ECE survey results and synthesize findings
2. Develop a final report and several audience-specific summaries
3. Present survey findings to WA Farm to ECE Alliance and Community of Practice

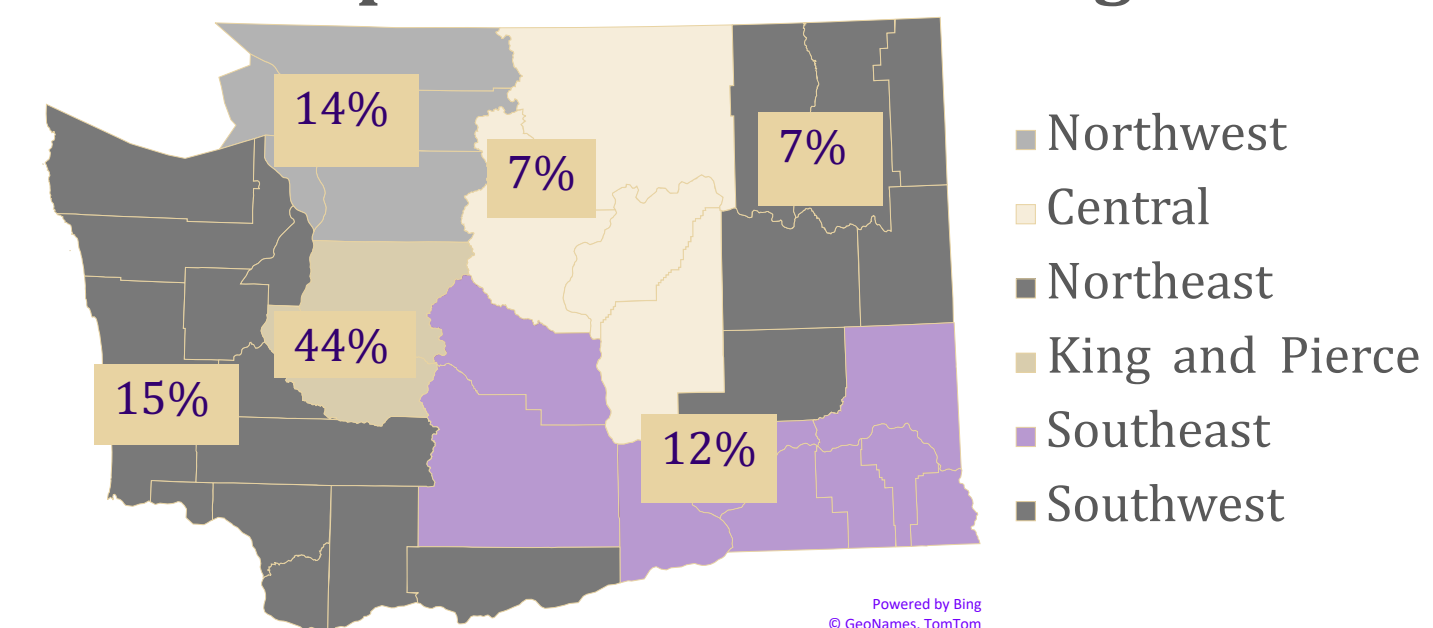
## MATERIALS & METHODS

- Performed descriptive statistics to understand who was reached in the survey, what ECE programs are already doing, and what challenges are faced
- Conducted inferential statistics in R to assess possible associations between various provider attributes and metrics including the extent of Farm to ECE engagement, barriers faced, and support needed
- Attended monthly Farm to ECE Alliance meetings to present iterative survey findings and obtain feedback on implications
- Synthesized findings into a full report and several other summarized versions

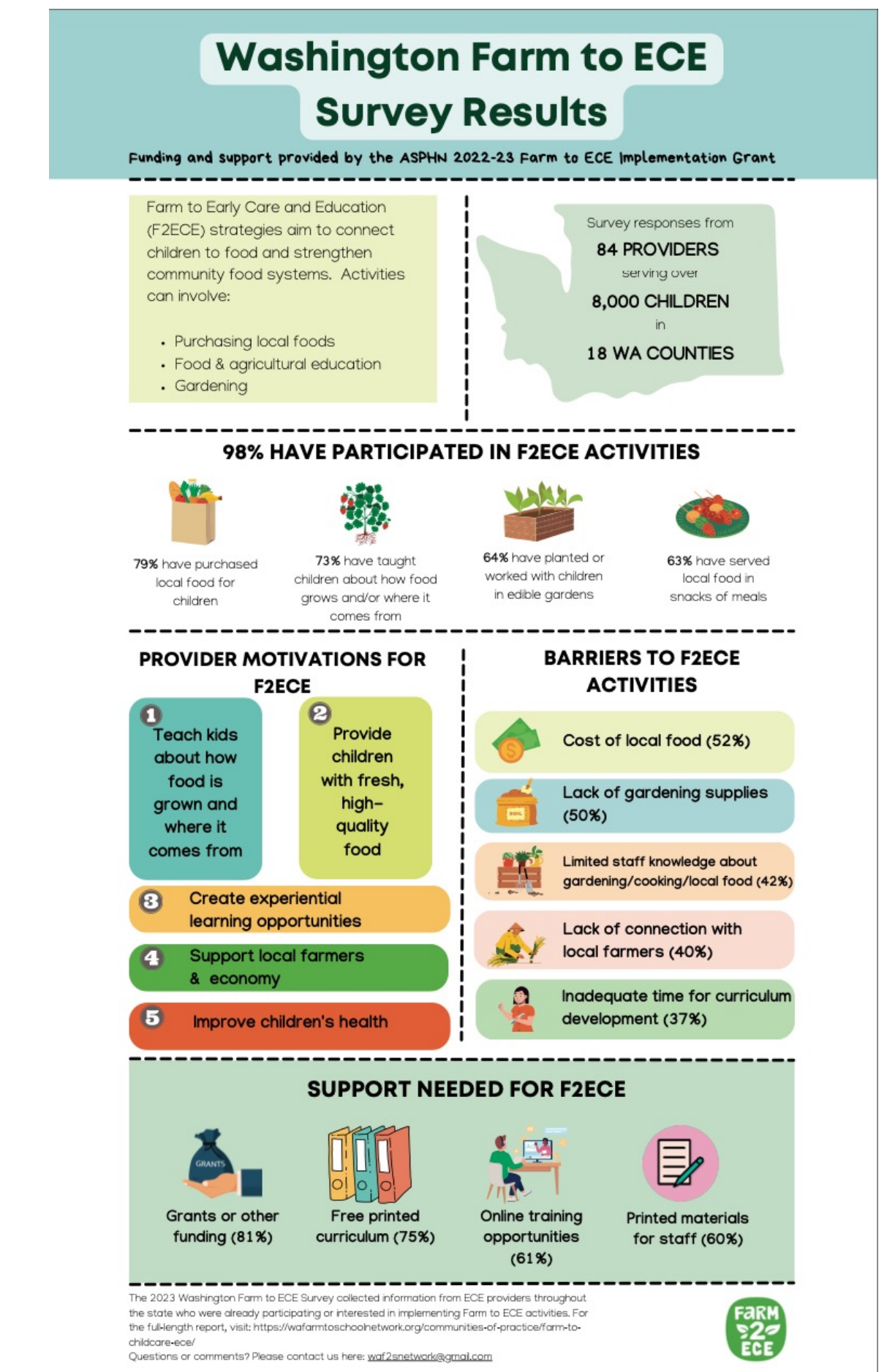
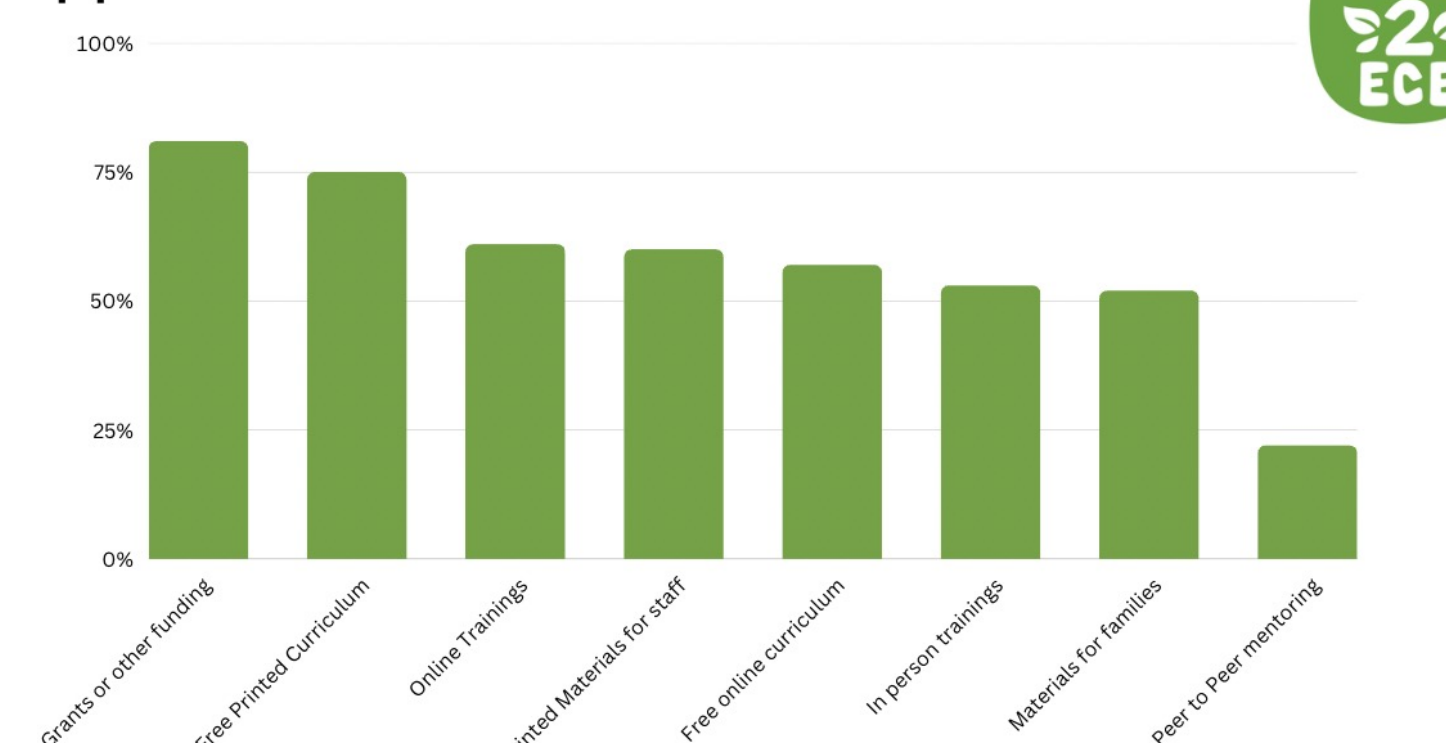
## RESULTS

- 15-page final report of survey findings with deep dives into:
  - ❖ demographics reached
  - ❖ overall engagement and specific activities within the 3 core elements of Farm to ECE
  - ❖ Barriers faced, supports needed, and recommendations for future work
- 4-page fact sheet summarizing survey findings, implications, and opportunities
- 1-page visual infographic
- Presentation for Farm to ECE Alliance to help inform work priorities

### Percentage of Total Survey Responses from Each Region



### Support Desired for F2ECE



## CONCLUSIONS

- Farm to ECE is already reaching a variety of ECE programs throughout Washington
- While motivations are high, survey participants face several barriers to Farm to ECE participation, including limited funding and provider knowledge
- Opportunities exist to better connect providers to existing resources, including training, grants for funding, and curricula
- **Survey findings confirm that future work should continue to focus on addressing racial and social inequities in Farm to ECE access**